

NOBLELIFT



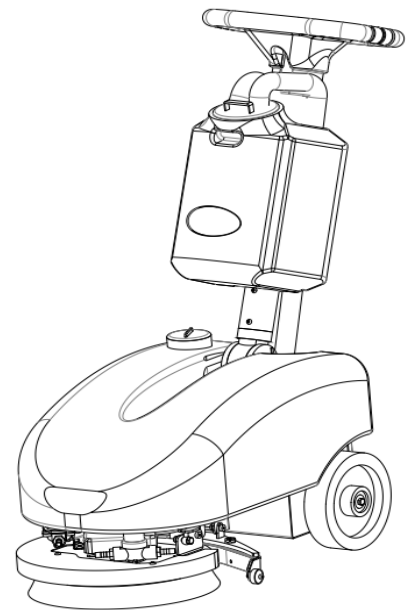
Scan QR Code for More

Walk-behind scrubber

NB380

Parts Manual

590946020101



Version V06

Scrubber Identification Number From:

Parts Manual NB380-PM06EN

Please order parts from authorized dealers of Noblelift Intelligent Equipment Co., LTD.

In order to avoid wrong delivery, all the orders for spare parts should specify the following items:

- Truck model, identification number and manufacture year.
- Orders for spare parts of mast, hydraulic transmission unit, steering axle, motor, etc. shall indicate the manufacture number of these parts.
- Codes for Noblelift spare parts are shown in the table of parts manual. Please also pay attention to the description of supply status, order quantity, etc. (check the number listed in "Mark" column of the parts manual).

"Mark" Column:

The unmarked indicates the parts are in short supply cycle.

Number 1: supply as package. Indicating these that parts are small parts and seal parts, which are supplied in package unit and in short supply cycle.

Number 2: supply with constraints. Indicating that these spare parts are not in stock and will be prepared for production after receiving the order from customers, which are in long supply cycle.

Number 3: phasing-out supply. Indicating that these parts will be replaced by new parts due to technical improvements and the current stock will not be available when these parts run out. Please check the description of technical improvements notice.

Number 4: supply as assembly. Indicating that these parts are assembly parts defined by manufacture process, which cannot be supplied as a single part.

Number 5: check other tables.

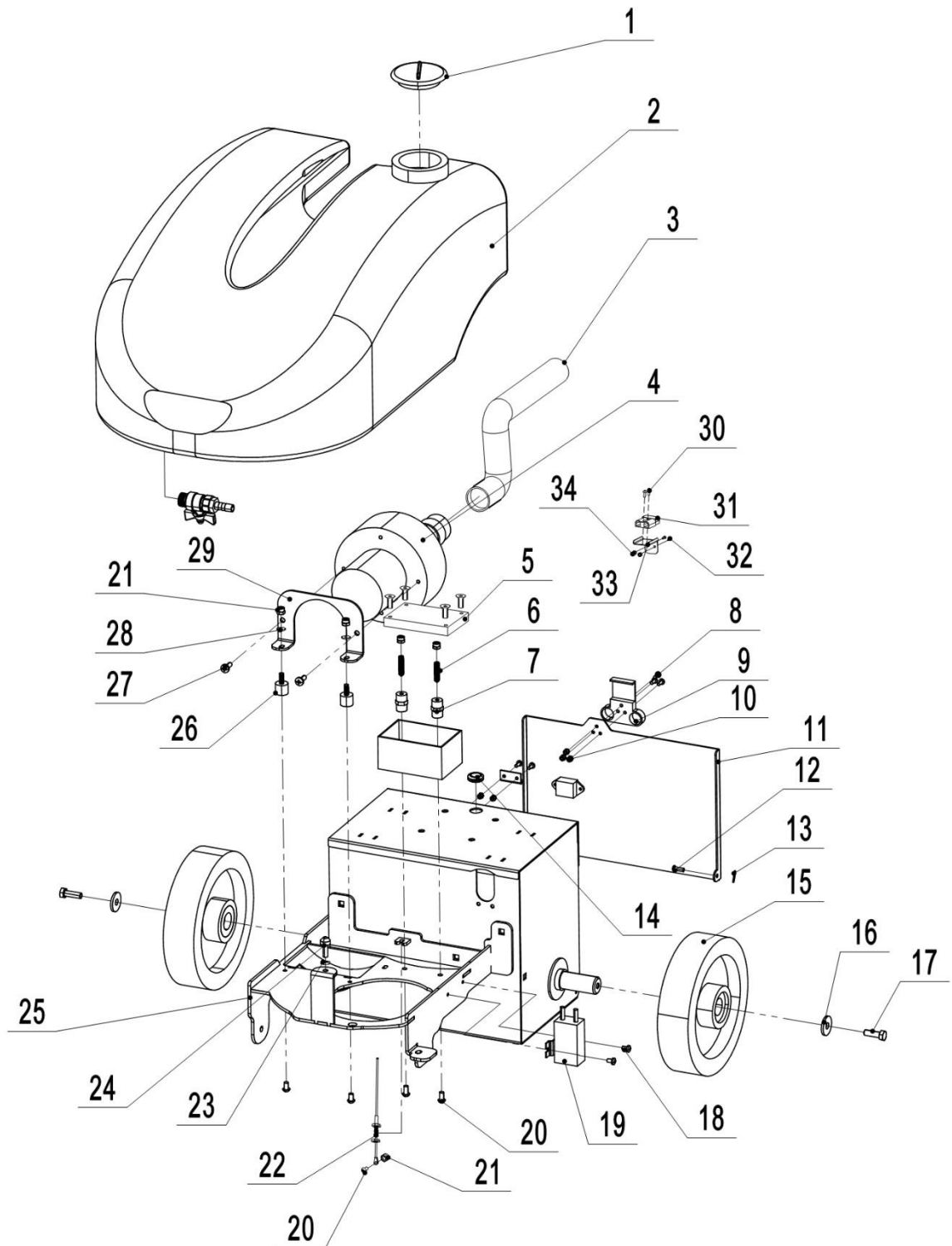
This parts manual is the property of Noblelift and can be shared under the confidential agreement only, Noblelift has the right to claim for compensation of any unauthorized use. Copy without permission is not allowed. Figures in the manual are not limited by the original design. Noblelift Intelligent Equipment Co., LTD reserves the right to improve the products for continuous technology progress.

Table of Contents

Chapter 1: Body Structure.....	1
01 Truck Frame (590946021501)	1
02 Aluminum Rod (590946021502)	5
03 Brush Disc (590946021503)	9
04 Water Scraper (590946021504)	11
05 Waterway (590946021505).....	13
06 Recovery Tank (590946021506).....	15
Chapter 2: Electrical Systems	17
01 Battery (590946037001)	17
02 Charger (590946036501).....	19
03 Harness Assembly (590946033001)	21
Chapter 3: Other.....	23
01 Signs (590947020001).....	23
Appendix.....	25
01 Electrical Schematics (590946045501)	25
02 List Of Wear Parts.....	26
03 List Of Consumables.....	27

Chapter 1: Body Structure

01 Truck Frame (590946021501)

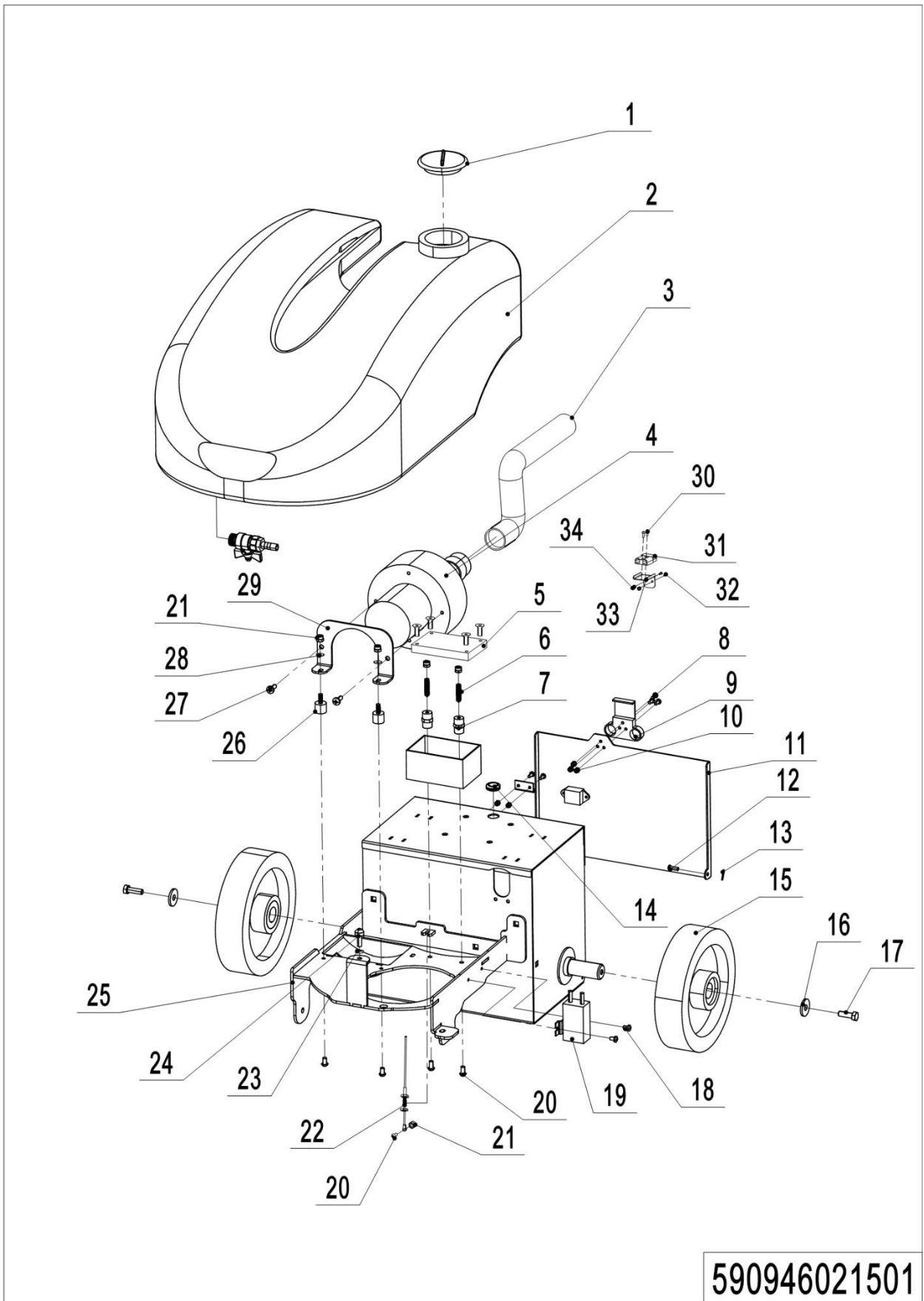


590946021501

01 Truck Frame (590946021501)

No.	Item Code	Mark	Item Description	Qty.	Substitute	NOTE
1	590998520000		Water Tank Cover	1		
2	590998520001		Solution Tank	1		
3	590998520002		Suction Pipe	1		1.23m
4	590198510011		Brushless Suction Motor	1		
5	590998520007		Electrical Box	1		
6	590998520008		Screw M6x25	2		
7	590998520009		Insulator	2		
8	590198520092		Screw M4x10	5		
9	590998520003		Latch	1		
10	590498520079		Nut M4	5		
11	590998520004		Battery Close Plate	1		
12	590998520006		Pin Shaft	2		
13	590998520005		Pin	2		
14	590998520012		Coil Guard	2		
15	590198520022		Wheel	2		
16	590198520103		Gasket	2		
17	590198520104		Screw M8x16	2		
18	590198520191		Screw M5x8	2		
19	590198510010		DC Relay	1		
20	590998520014		Screw M6x12	5		
21	590198520067		Nut M6	5		
22	590998520013		Rope	1		
23	590198520122		Nut M8	1		
24	590998520017		Screw M8x20	1		
25	590998520016		Frame	1		
26	590998520018		Absorber	2		
27	590998520019		Screw M5x16	2		
28	590198520079		Gasket	2		
29	590998520020		Fixed Plate	1		
30	590398520078		Screw M3x20	2		

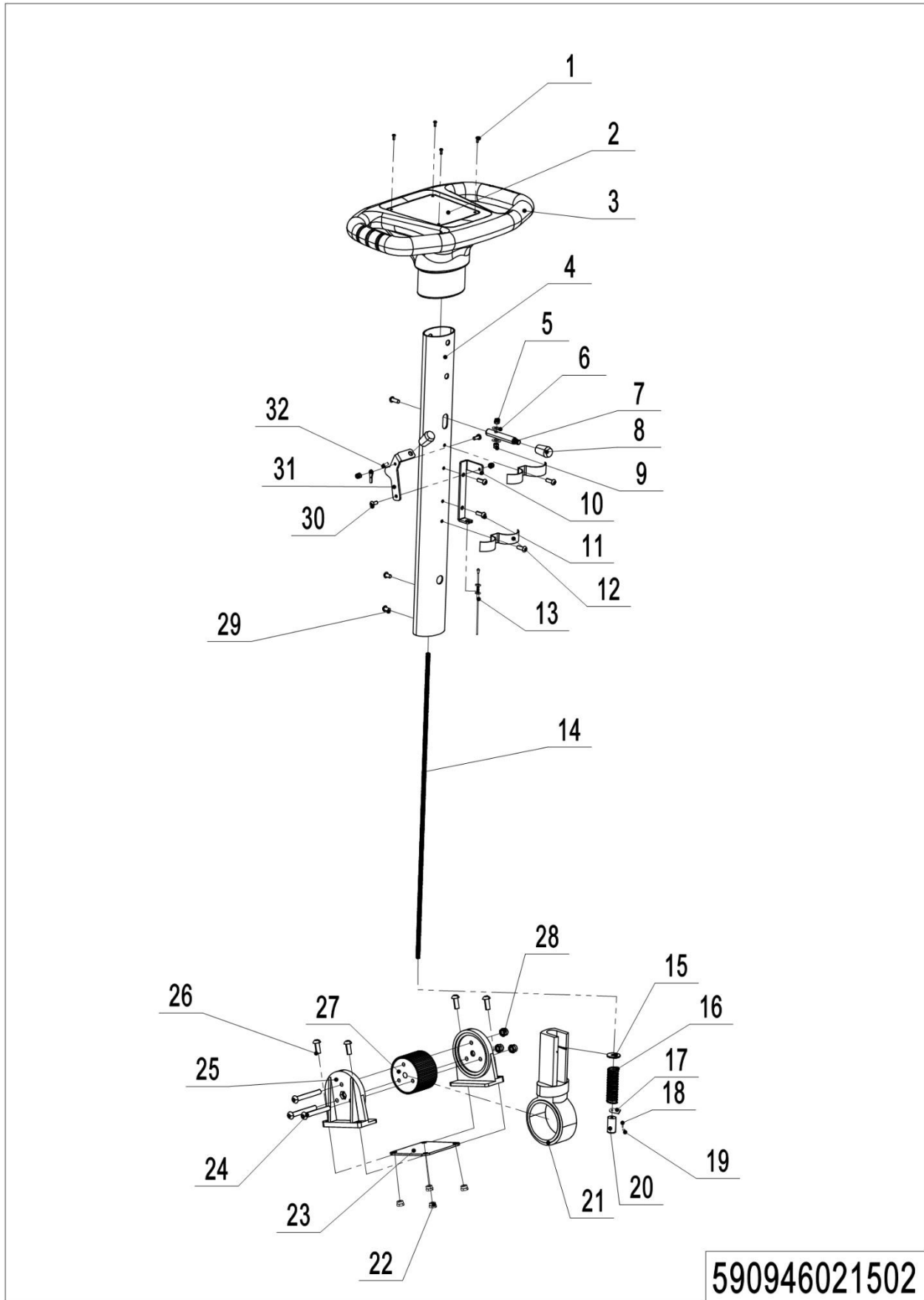
01 Truck Frame (590946021501) Continuation



590946021501

01 Truck Frame (590946021501) Continuation

No.	Item Code	Mark	Item Description	Qty.	Substitute	Note
31	590998520218		Wire Harness	1		
32	590198520093		Screw M5x12	2		
33	590998520219		Fixed Sheet Metal	1		
34	590198520068		Nut M5	2		

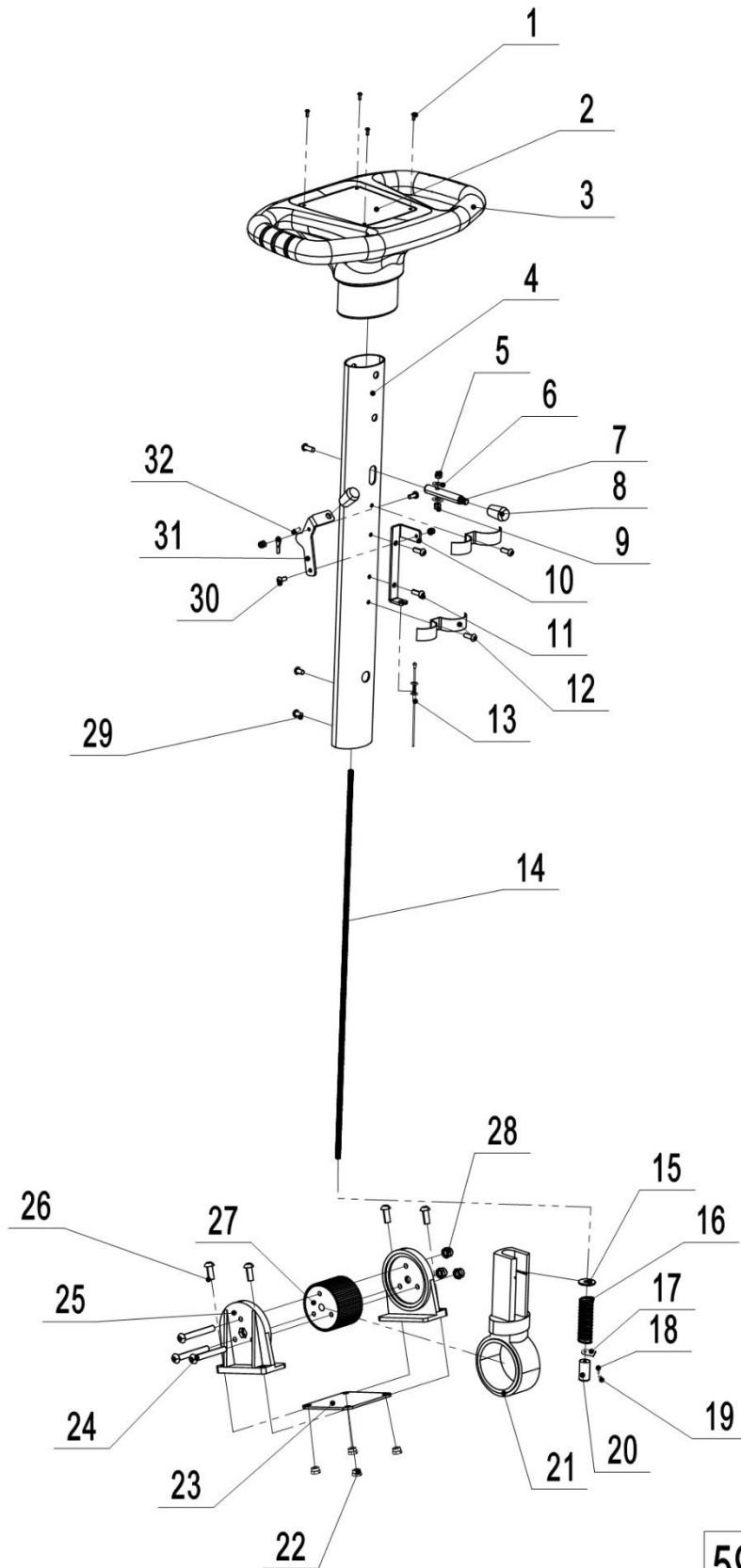
02 Aluminum Rod (590946021502)

02 Aluminum Rod (590946021502)

No.	Item Code	Mark	Item Description	Qty.	Substitute	Note
1	590998520059		Screw M4x12	4		
2	590998520060		PCB	1		
3	590998520061		Tiller	1		
4	590998520062		Aluminum Rod	1		
5	590198520068		Nut M5	3		
6	590198520078		Gasket	2		
7	590998520064		Lifting Rod	1		
8	590998520065		Handle M8x28	2		
9	590998520066		Nut M5	1		
10	590998520067		Wire Rope Bracket	1		
11	590998520068		Screw M6x16	7		
12	590998520069		Hose Buckle	2		
13	590998520013		Rope	1		
14	590998520073		Lead Screw	1		
15	590198520080		Gasket	1		
16	590998520075		Press Spring	1		
17	590998520074		Tableting	1		
18	590998520076		Key	1		
19	590998520077		Pin	1		
20	590998520078		Gear	1		
21	590998520079		Aluminum Shaft	1		
22	590198520066		Nut M8	4		
23	590998520084		Reinforcement Plate	1		
24	590998520080		Screw M6x65	3		
25	590998520081		Aluminum Bracket	2		
26	590998520082		Screw M8x25	4		
27	590998520083		Gear	1		
28	590198520067		Nut M6	3		
29	590998520014		Screw M6x12	2		
30	590198520093		Screw M5x12	2		
31	590998520071		Lifting	1		

1= Supply as package. 2= Supply with constraints. 3= Phasing-out supply. 4= Supply as assembly. 5= Check other tables.

02 Aluminum Rod (590946021502) Continuation

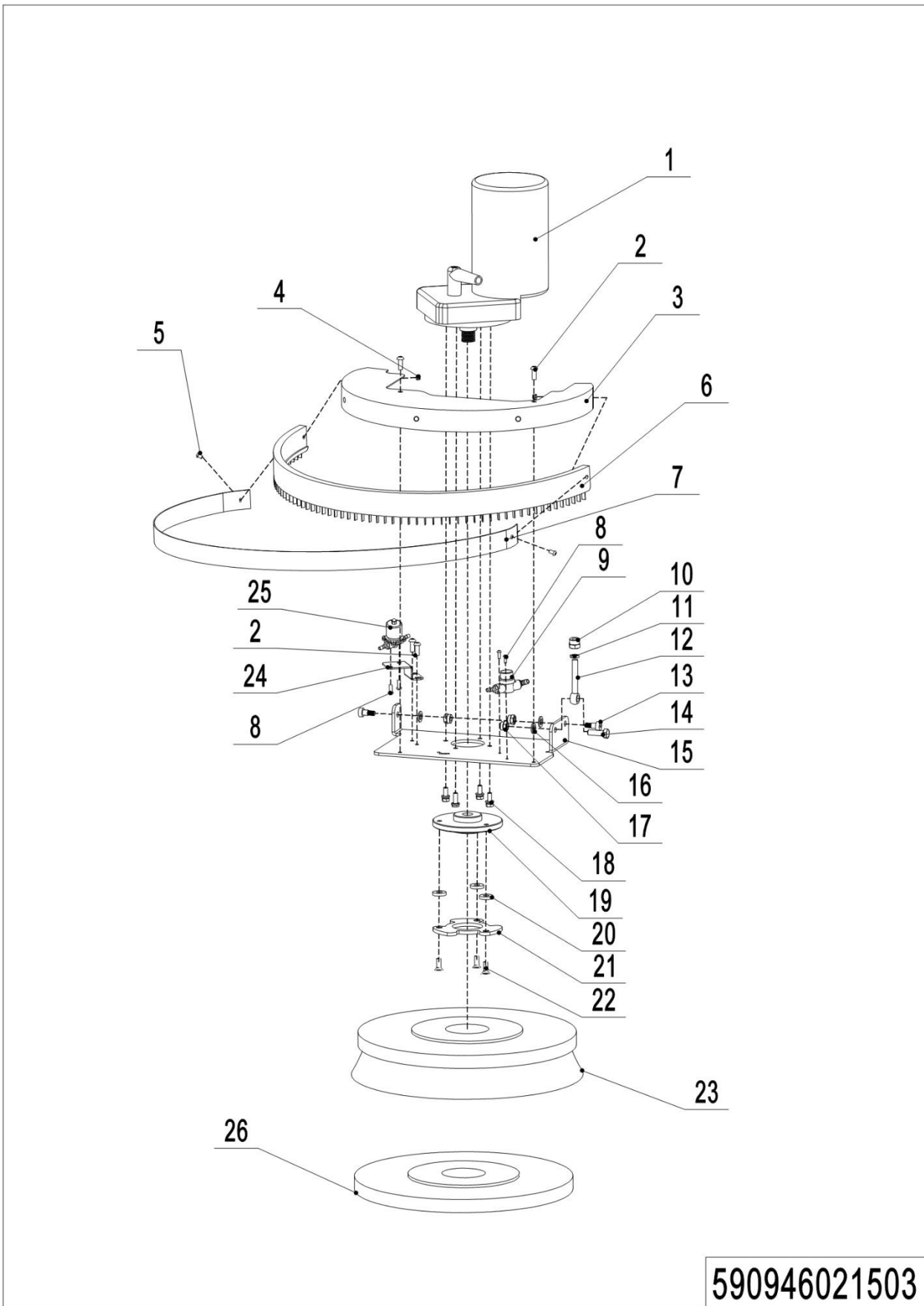


590946021502

02 Aluminum Rod (590946021502) Continuation

No.	Item Code	Mark	Item Description	Qty.	Substitute	Note
32	590998520072		Screw M8x16	1		

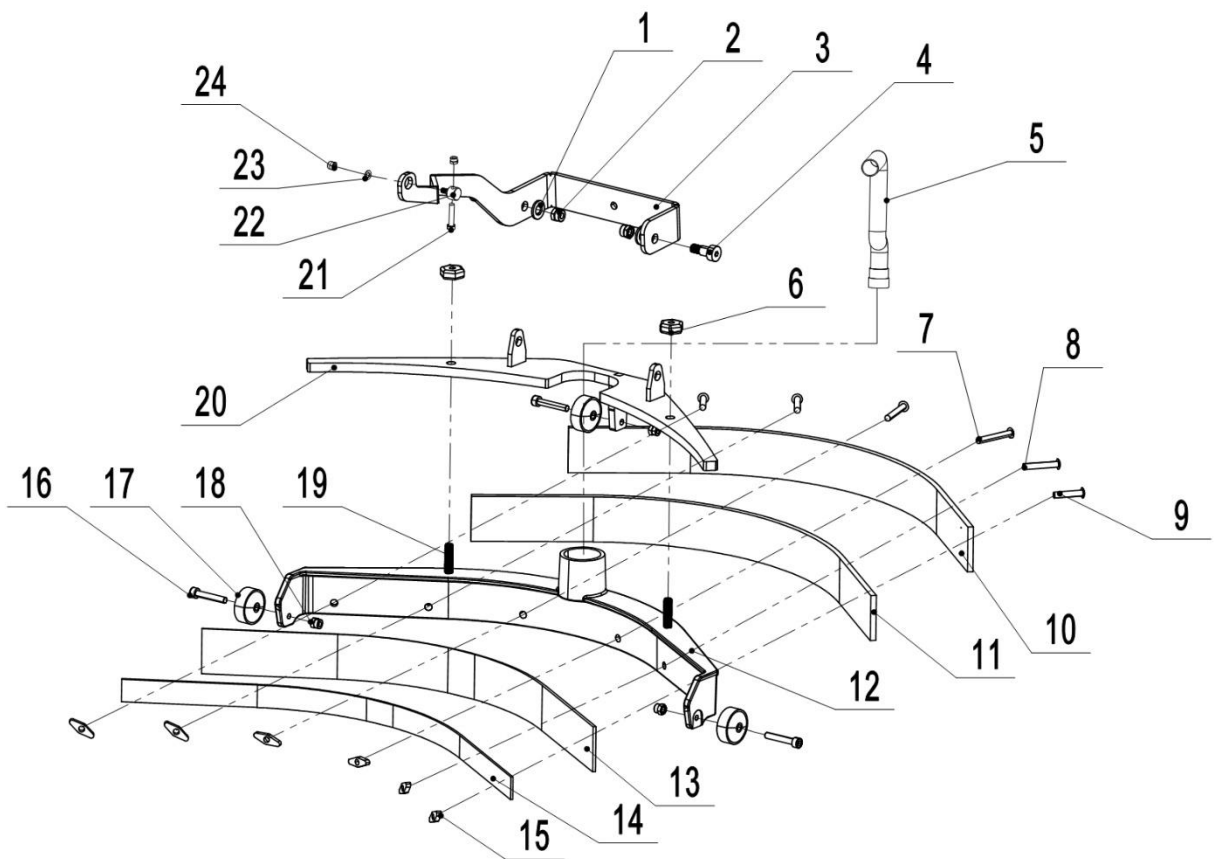
03 Brush Disc (590946021503)



590946021503

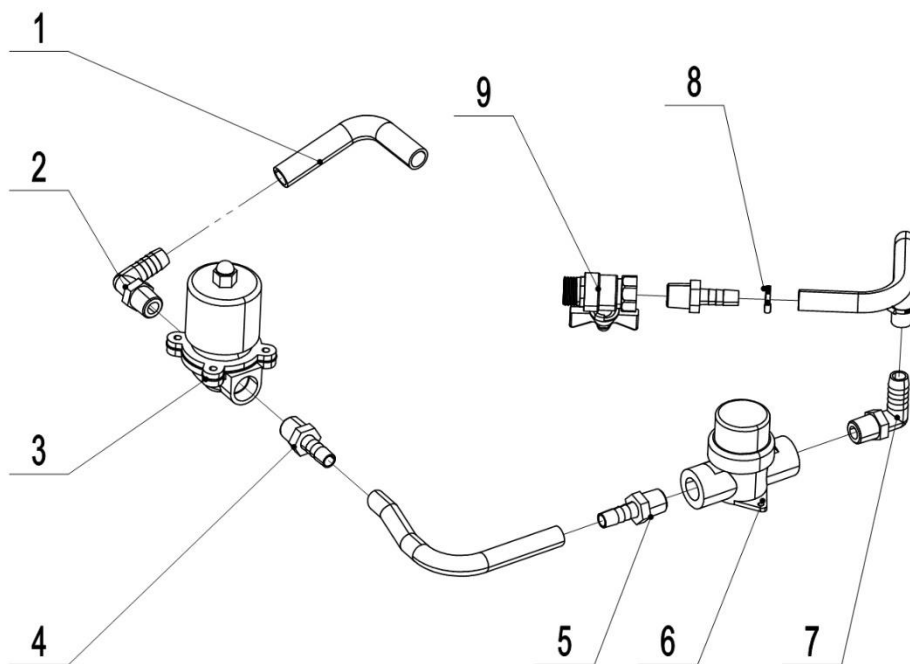
03 Brush Disc (590946021503)

No.	Item Code	Mark	Item Description	Qty.	Substitute	Note
1	590998520021		Brush Motor	1		
2	590998520014		Screw M6x12	4		
3	590998520023		Brush Cover	1		
4	590198520068		Nut M5	2		
5	590198520093		Screw M5x12	2		
6	590998520024		Water Barrier Skirt	1		
7	590998520104		Skirt Pressing	1		
8	590198520092		Screw M4x10	4		
9	590998520056		Filter	1		
10	590198520066		Nut M8	2		
11	590198520122		Nut M8	1		
12	590998520025		Joint Bearing	1		
13	590998520027		Screw M8x10	2		
14	590198520100		Screw M8x25	1		
15	590998520026		Fixed Plate	1		
16	590198520079		Gasket	2		
17	590198520067		Nut M6	2		
18	590198520142		Screw M6x16	4		
19	590998520028		Flange Disk	1		
20	590998520029		Flange Gasket	3		
21	590998520030		Flange Plate	1		
22	590998520031		Screw M8x20	3		
23	590998520032		Brush(14 inch)	1		
23	590998520033		Needle Disk(14 inch)	1		
24	590998520035		Sheet Metal	1		
25	590998520054		Solenoid Valve	1		
26	590998520119		Scouring Pad(14 inch, Red)	1		
26	590998520120		Scouring Pad(14 inch, White)	1		
26	590998520121		Scouring Pad(14 inch, Black)	1		

04 Water Scraper (590946021504)**590946021504**

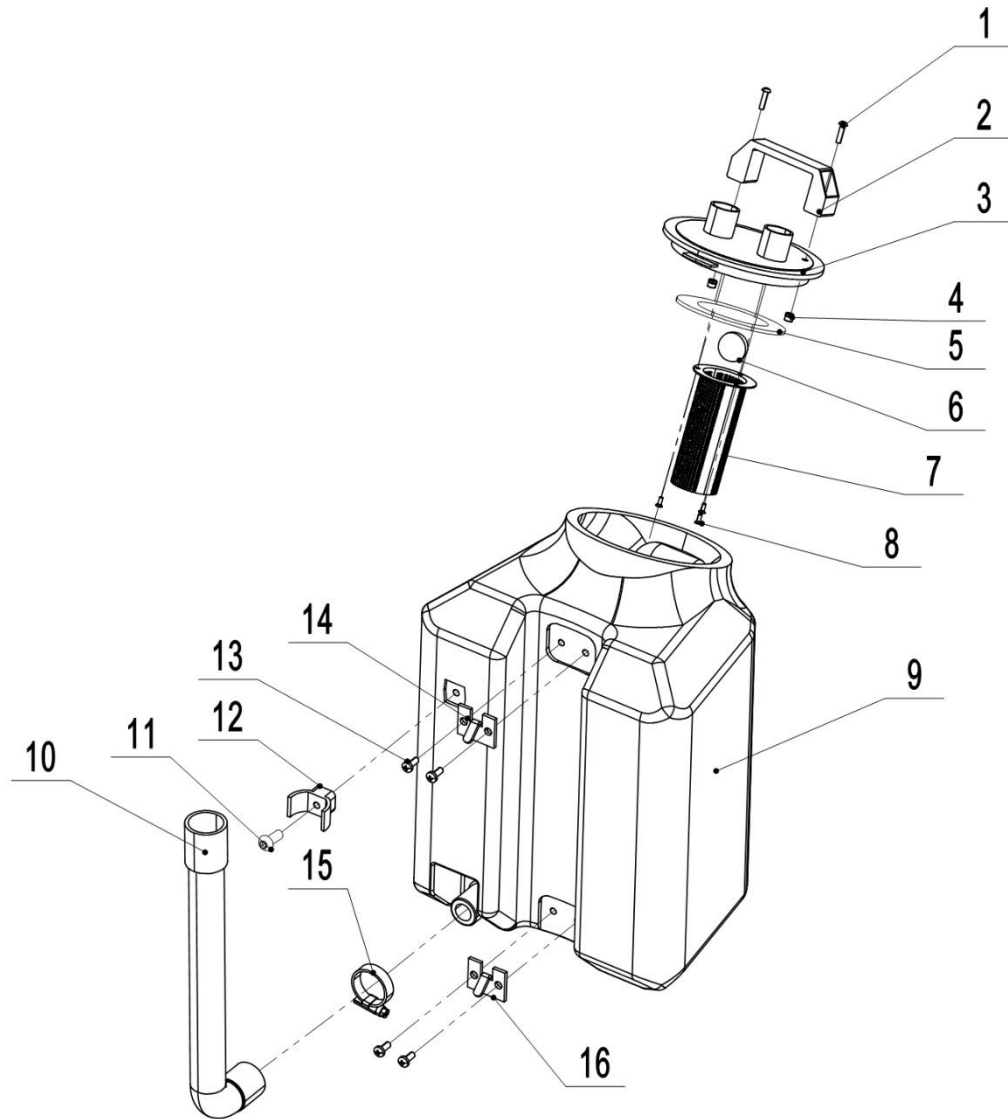
04 Water Scraper (590946021504)

No.	Item Code	Mark	Item Description	Qty.	Substitute	Note
1	590198520079		Gasket	2		
2	590198520067		Nut M6	2		
3	590998520036		Bogies	1		
4	590998520027		Screw M8x10	2		
5	590998520038		Suction Pipe	1		1.48m
6	590998520039		Nut M6x25	2		
7	590998520040		Screw M5x35	2		
8	590998520041		Screw M5x30	2		
9	590998520042		Screw M5x25	2		
10	590998520043		Rear Pressing Strip	1		
11	590998520044		Front Blade (NR)	1		
12	590998520045		Squeegee Blade	1		
13	590998520050		Rear Blade (NR)	1		
14	590998520049		Front Pressing Strip	1		
15	590998520048		Nut M5x20	6		
16	590998520046		Screw M5x30	3		
17	590998520047		Wheel Φ 32x13	3		
18	590198520068		Nut M5	3		
19	590998520053		Screw M6x30	2		
20	590998520052		Squeegee Bracket	1		
21	590498520130		Screw M8x35	1		
22	590998520051		Cardan Shaft	1		
23	590398520102		Gasket	1		
24	590198520066		Nut M8	2		

05 Waterway (590946021505)**590946021505**

05 Waterway (590946021505)

No.	Item Code	Mark	Item Description	Qty.	Substitute	Note
1	590998520262		Water Pipe	1		0.44m
2	590198510012		Connectors	1		
3	590998520054		Solenoid Valve	1		
4	590198510013		Connectors	2		
5	590998520055		Connectors	1		
6	590998520056		Filter	1		
7	590998520057		Right-angle Joint	1		
8	590198520096		Hoop	2		
9	590998520058		Valve	1		

06 Recovery Tank (590946021506)

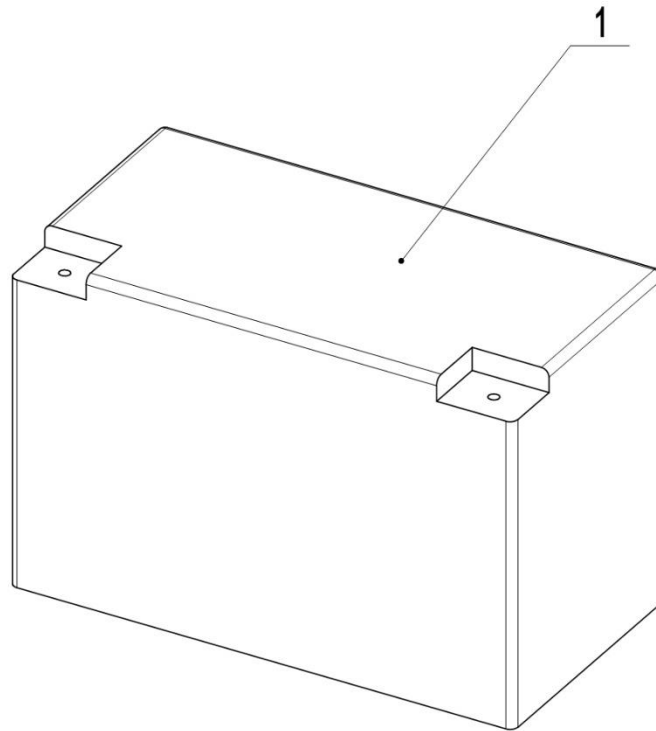
590946021506

06 Waste Water Tank Components (590946021506)

No.	Item Code	Mark	Item Description	Qty.	Substitute	Note
1	590998520085		Screw M4x16	2		
2	590998520086		Lifting	1		
3	590998520087		Recovery Tank Cap	1		
4	590498520079		Nut M4	2		
5	590998520088		Sealing Ring	1		
6	590998520089		Floating Ball	1		
7	590998520090		Filter	1		
8	590998520091		Screw M3x10	3		
9	590998520092		Recovery Tank	1		
10	590998520096		Drain Hose	1		0.4m Elastic Tube
11	590798510023		Screw M5x20	1		
12	590998520094		Drain Hose Clamps	1		
13	590198520093		Screw M5x12	4		
14	590998520093		Snap Hooks	1		
15	590998520095		Hoop	1		
16	590998520118		Snap Hooks	1		

Chapter 2: Electrical Systems

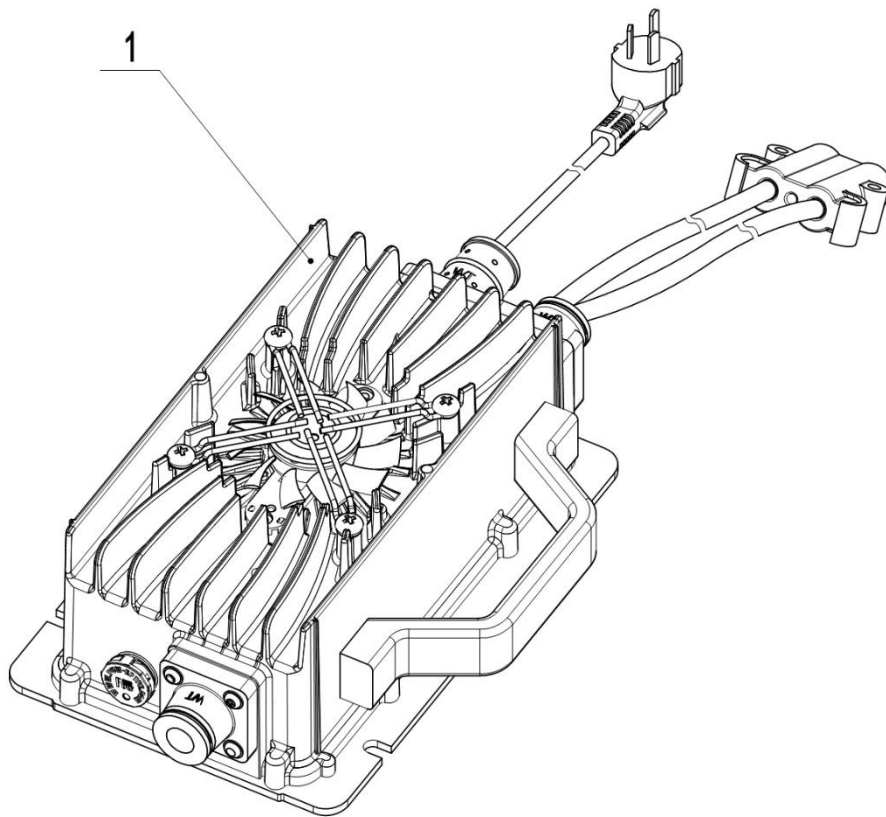
01 Battery (590946037001)



590946037001

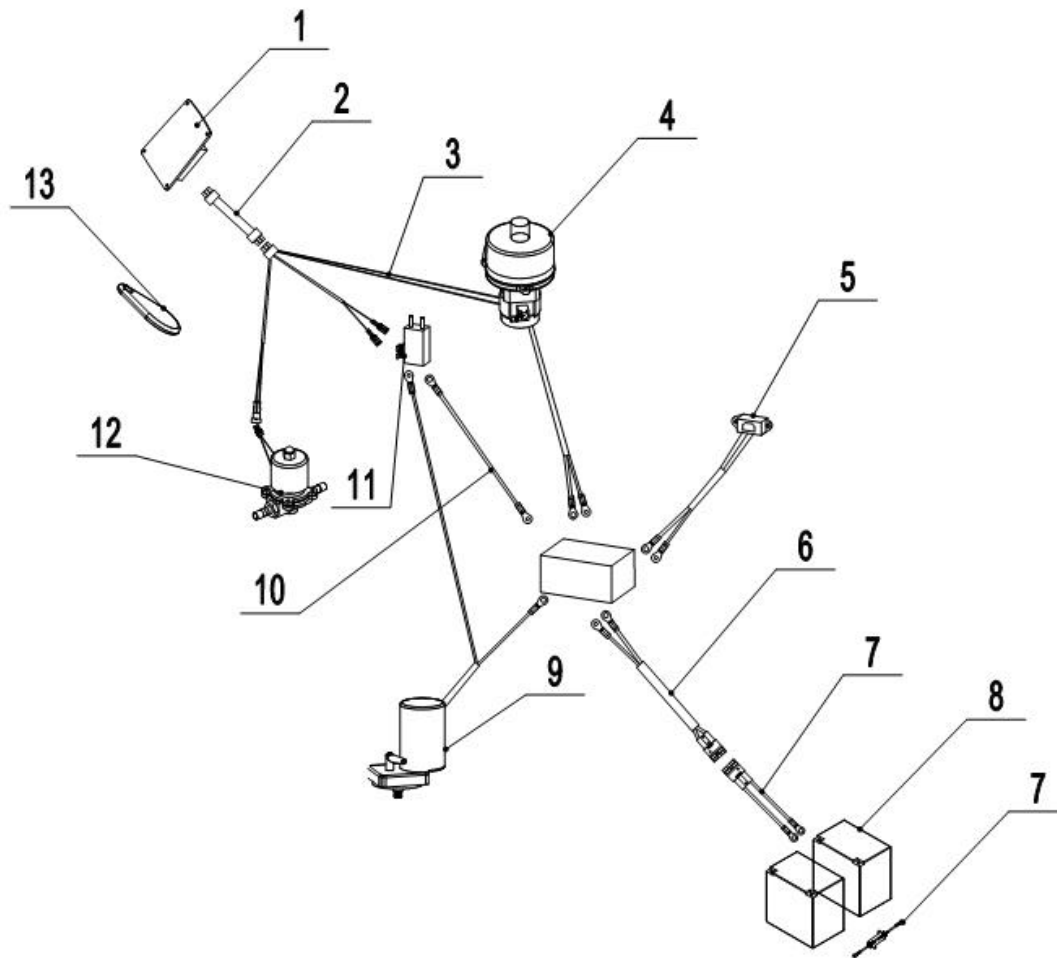
01 Battery (590946037001)

No.	Item Code	Mark	Item Description	Qty.	Substitute	Note
1	590998520102		Battery 12V32AH	2		

02 Charger (590946036501)**590946036501**

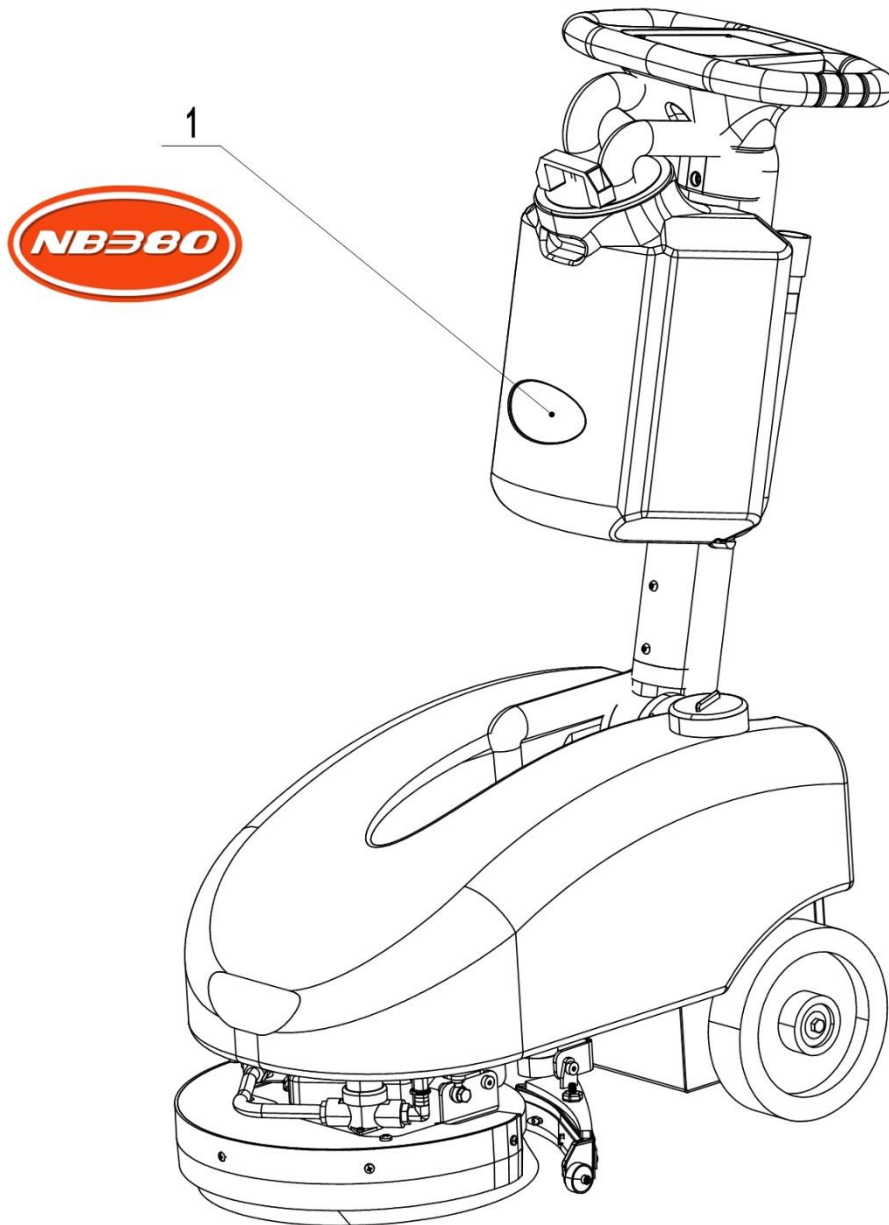
02 Charger (590946036501)

No.	Item Code	Mark	Item Description	Qty.	Substitute	Note
1	590998520521		Charger 24V5A(Asia)	1		
1	590998520522		Charger 24V5A(ENG)	1		
1	590998520523		Charger 24V5A(USA)	1		
1	590998520524		Charger 24V5A(EU)	1		
1	590998520525		Charger 24V5A(AUS)	1		
1	590998520526		Charger 24V5A(ITA)	1		
1	590998520527		Charger 24V5A(CH)	1		
1	590998520528		Charger 24V5A(ISR)	1		
1	590998520529		Charger 24V5A(BRA)	1		
1	590998520539		Charger 24V5A(USA)	1		CSA certification

03 Harness Assembly (590946033001)**590946033001**

03 Harness Assembly (590946033001)

No.	Item Code	Mark	Item Description	Qty.	Substitute	Note
1	590998520060		PCB	1		
2	590998520097		Wire Harness	1		
3	590998520098		Wire Harness	1		
4	590198510011		Brushless Suction Motor	1		
5	590998520218		Wire Harness	1		
6	590998520100		Wire Harness	1		
7	590998520101		Wire Harness	1		
8	590998520102		Battery 12V32AH	2		
9	590998520021		Brush Motor	1		
10	590998520103		Wire Harness	1		
11	590198510010		DC Relay	1		
12	590998520054		Solenoid Valve	1		
13	591298520086		NFC Key	1		

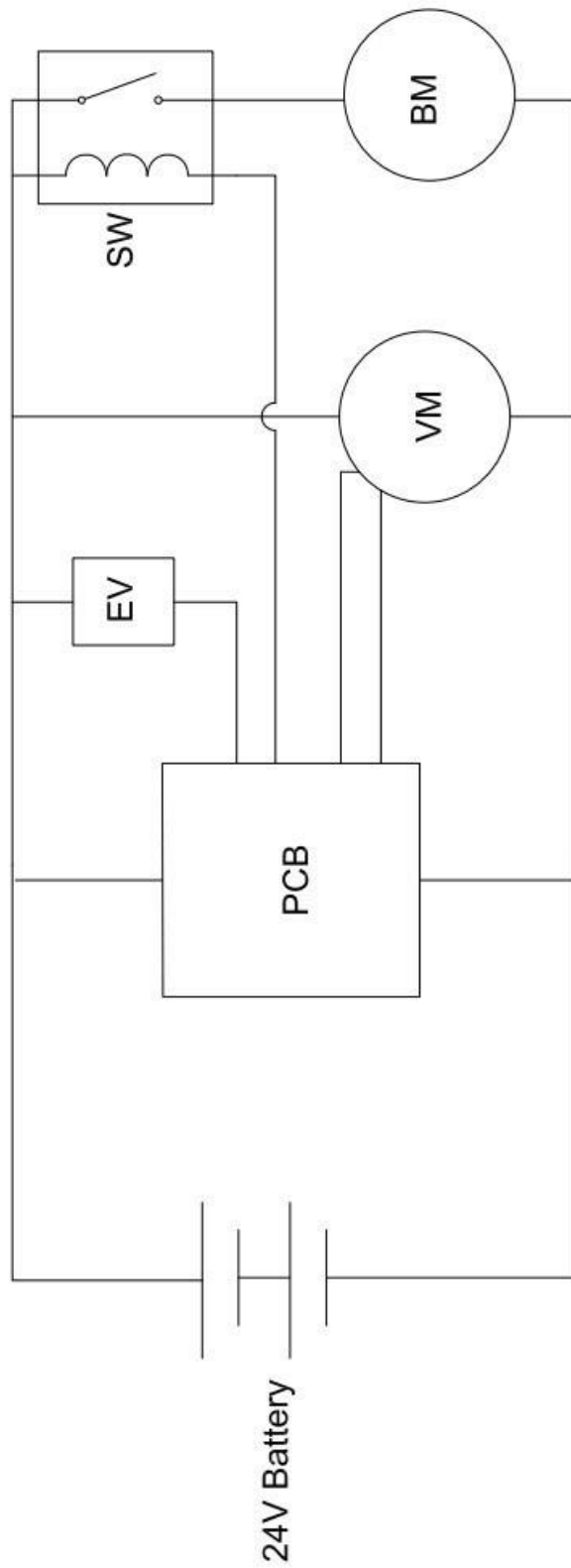
Chapter 3: Other**01 Signs (590947020001)****590947020001**

01 Signs (590947020001)

No.	Item Code	Mark	Item Description	Qty.	Substitute	Note
1	590998520217		Label (NB380)	1		

Appendix

01 Electrical Schematics (590946045501)



PCB: Control panel
EV: Electric valve
VM: Vacuum motor
BM: Brush motor
SW: Contactor

02 List Of Wear Parts

No.	Item Code	Item Description	Qty.	Chapter/ Section/ Number
1	590998520002	Suction Pipe	1	Chapter 1/01/03
2	590198510011	Brushless Suction Motor	1	Chapter 1/01/04
3	590198520022	Wheel	2	Chapter 1/01/15
4	590998520018	Absorber	2	Chapter 1/01/26
5	590998520021	Brush Motor	1	Chapter 1/03/01
6	590998520056	Filter	1	Chapter 1/03/09
7	590998520054	Solenoid Valve	1	Chapter 1/03/25
8	590998520038	Suction Pipe	1	Chapter 1/04/05
9	590998520047	Wheel $\Phi 32 \times 13$	3	Chapter 1/04/17
10	590198520062	Water Pipe	1	Chapter 1/05/01
11	590998520058	Valve	1	Chapter 1/05/09
12	590998520088	Sealing Ring	1	Chapter 1/06/05
13	590998520089	Floating Ball	1	Chapter 1/06/06
14	590998520090	Filter	1	Chapter 1/06/07

03 List Of Consumables

No.	Item Code	Item Description	Qty.	Chapter/ Section/ Number
1	590998520032	Brush (14 inch)	1	Chapter 1/03/23
1*	590998520033	Needle Disk (14 inch)	1	Chapter 1/03/23
	590998520114	Brush (Soft)	1	Matching
	590998520115	Brush (Hard)	1	Matching
2	590998520044	Front Blade (NR)	1	Chapter 1/04/11
	590998520116	Front Blade (PU)	1	Chapter 1/04/11
3	590998520050	Rear Blade (NR)	1	Chapter 1/04/13
	590998520117	Rear Blade (PU)	1	Chapter 1/04/13
4	590998520119	Scouring Pad (14 inch, Red)	1	Chapter 1/03/26
	590998520120	Scouring Pad (14 inch, White)	1	Chapter 1/03/26
	590998520121	Scouring Pad (14 inch, Black)	1	Chapter 1/03/26