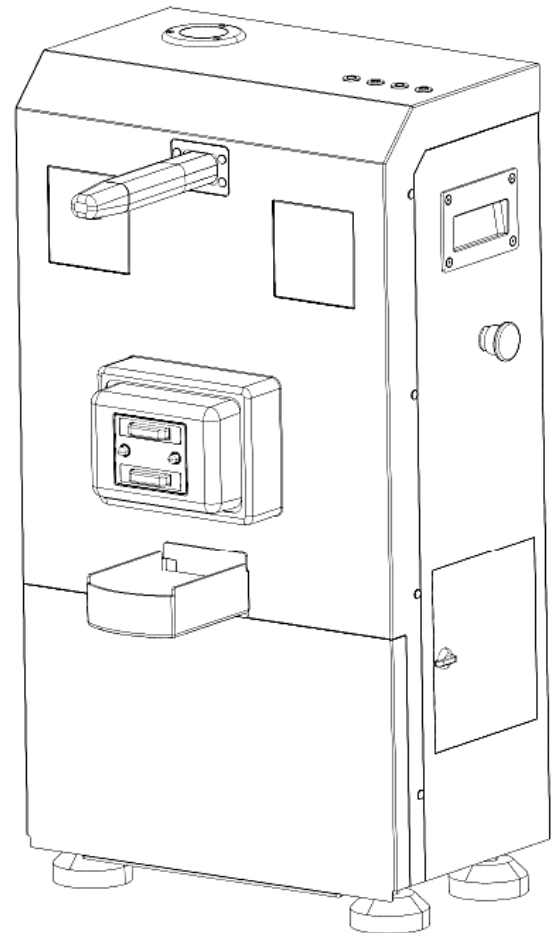


Workstation CWS-01

PARTS MANUAL

590946020131



Version: V01

Truck Identification Number From :

Parts Manual

CWS-01-PM01EN

Please order spare parts from authorized dealers of our Company.

In order to avoid wrong delivery, all the orders for spare parts should specify the following items:

- Truck model, identification number and manufacture year.
- Orders for spare parts of mast, hydraulic transmission unit, steering axle, motor, etc. shall indicate the manufacture number of these parts.
- Codes for Our Company spare parts are shown in the table of parts manual. Please also pay attention to the description of supply status, order quantity, etc. (check the number listed in "Mark" column of the parts manual).

"Mark" Column:

The unmarked indicates the parts are in short supply cycle.

Number 1: supply as package. Indicating these that parts are small parts and seal parts, which are supplied in package unit and in short supply cycle.

Number 2: supply with constraints. Indicating that these spare parts are not in stock and will be prepared for production after receiving the order from customers, which are in long supply cycle.

Number 3: phasing-out supply. Indicating that these parts will be replaced by new parts due to technical improvements and the current stock will not be available when these parts run out. Please check the description of technical improvements notice.

Number 4: supply as assembly. Indicating that these parts are assembly parts defined by manufacture process, which cannot be supplied as a single part.

Number 5: check other tables.

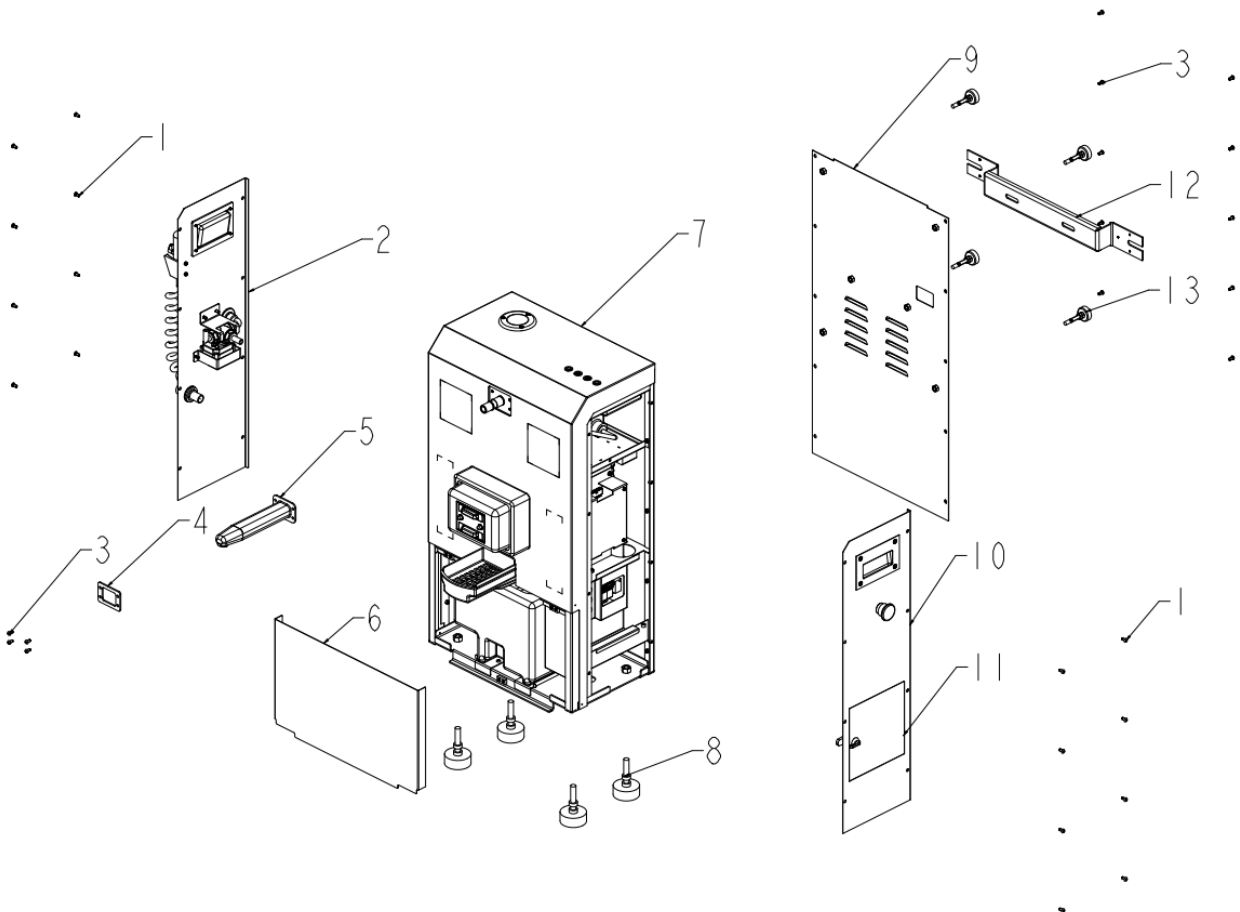
This parts manual is the property of Our Company and can be shared under the confidential agreement only, Our Company has the right to claim for compensation of any unauthorized use. Copy without permission is not allowed. Figures in the manual are not limited by the original design. our Company reserves the right to improve the products for continuous technology progress.

Table of Contents

Chapter 1: Body Structure.....	2
01 Cover Assembly (590946021550)	2
02 Freshwater Connector Assembly (590946021551).....	4
03 Right Panel Assembly (590946021552)	6
04 Wastewater Connector Assembly (590946021553)	7
05 Recovery Tank (590946021554).....	8
06 Detergent Connector Assembly (590946021555).....	9
Chapter 2: Electronic Control System	10
01 Electrical and Electronic System Assembly (590946021556).....	10
02 Air Circuit Breaker Cover Assembly (590946021557)	12
03 Charging Mechanism Assembly (590946021558).....	13
04 Front Charging Plate Assembly (590946021559).....	14
05 Rear Charging Plate Assembly (590946021560)	15
Appendix.....	16
01 Accessories.....	16

Chapter 1: Body Structure

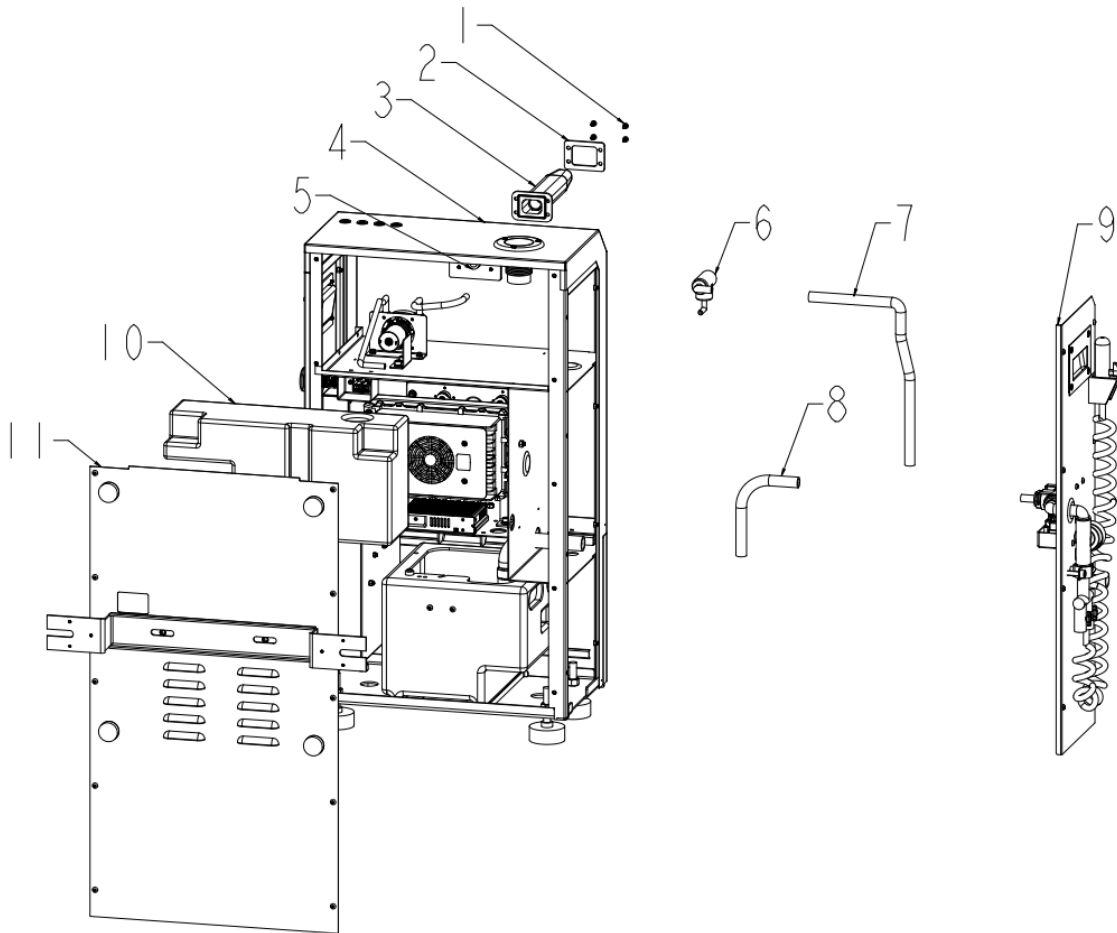
01 Cover Assembly (590946021550)



01 Cover Assembly (590946021550)

No.	Item Code	Mark	Item Description	Qty.	Substitute	Note
1	590998521003		Screw, M5x10	16		
2	-		Right Panel Assembly	1		
3	590998521011		Screw, M5x10	14		
4	590998521048		Fixing Plate, Water Outlet	1		
5	590998521052		Solution Outlet, Rubber	1		
6	590998521041		Front Cover Assembly	1		
7	-		Frame Assembly	1		
8	590998521031		Leveling Foot, D65*M12*80	4		
9	590998521046		Rear Cover Assembly	1		
10	-		Left Panel Assembly	1		
11	-		Side Door Assembly	1		
12	590998521060		Wall Bracket	1		
13	590998521036		Rear Spacer Foot, D40*M8*50	4		

02 Freshwater Connector Assembly (590946021551)

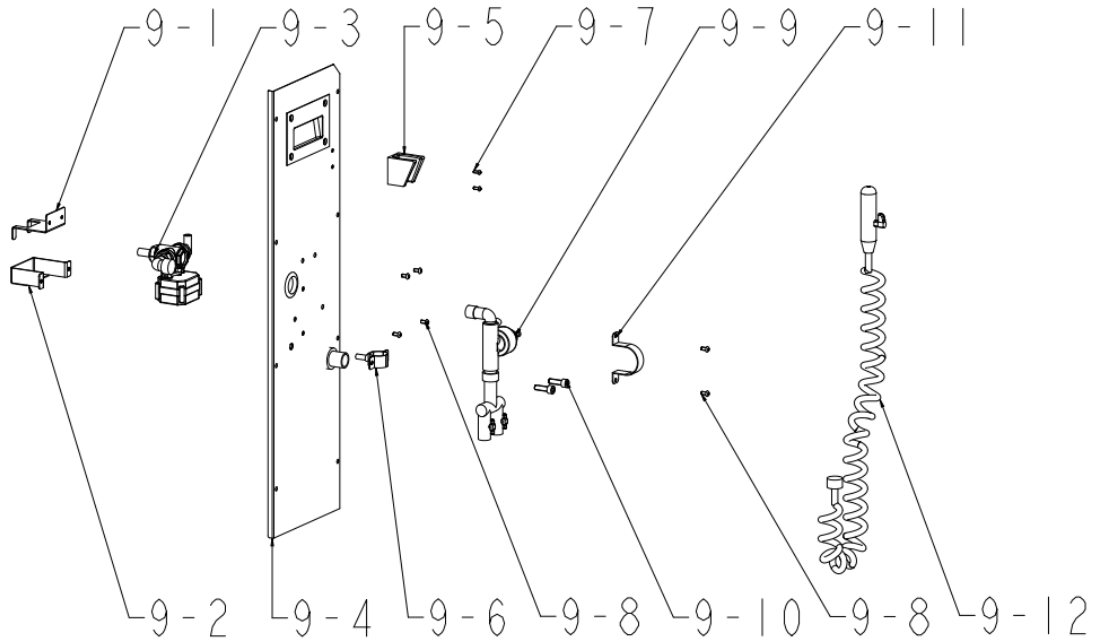


1= Supply as package. 2= Supply with constraints. 3= Phasing-out supply. 4= Supply as assembly. 5= Check other tables.

02 Freshwater Connector Assembly (590946021551)

No.	Item Code	Mark	Item Description	Qty.	Substitute	Note
1	590998521011		Screw, Black, M5x10	4		
2	590998521048		Fixing Plate, Water Outlet	1		
3	590998521052		Solution Outlet, Rubber	1		
4	-		Frame Assembly	1		
5	-		Solution Filling Tube	1		
6	590998521064		Upper Three-Way Assembly	1		
7	590998520264		Freshwater Textured Hose 1	1		
8	590998520264		Freshwater Textured Hose 2	1		
9	-		Right Panel Assembly	1		
10	590998521065		Detergent Tank Assembly	1		
11	-		Rear Cover Assembly	1		

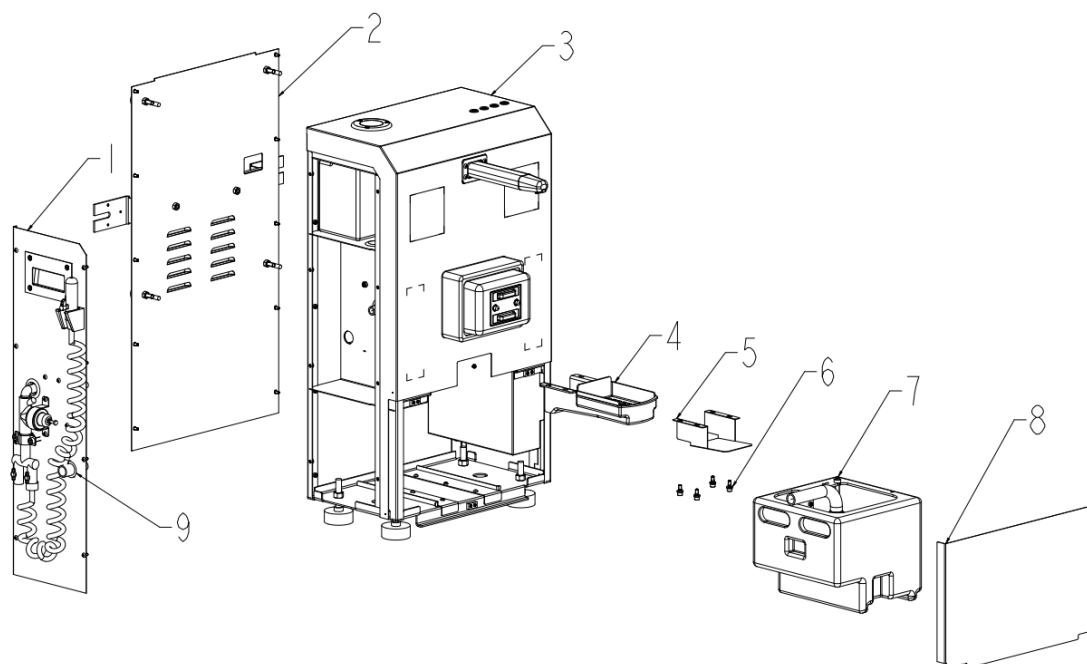
03 Right Panel Assembly (590946021552)



03 Right Panel Assembly (590946021552)

No.	Item Code	Mark	Item Description	Qty.	Substitute	Note
9-1	590998521050		Electric Ball Valve Bracket	1		
9-2	590998521043		Electric Ball Valve Clamp	1		
9-3	590998521066		Electric Three-way Ball Valve Assembly	1		
9-4	-		Right Panel	1		
9-5	590998521029		Nozzle Bracket	1		
9-6	590998521027		Pressure Regulator Valve Clamp, SUS304	1		
9-7	590998520225		Screw, Black, M4x10	2		
9-8	590998521003		Screw, Black, M5x10	6		
9-9	590998521067		Pressure Regulator Valve Assembly	1		
9-10	-		Screw, Black, M8x25	2		
9-11	590998521028		Pressure Regulator Valve Clamp	1		
9-12	590998521069		Nozzle Assembly	1		

04 Wastewater Connector Assembly (590946021553)

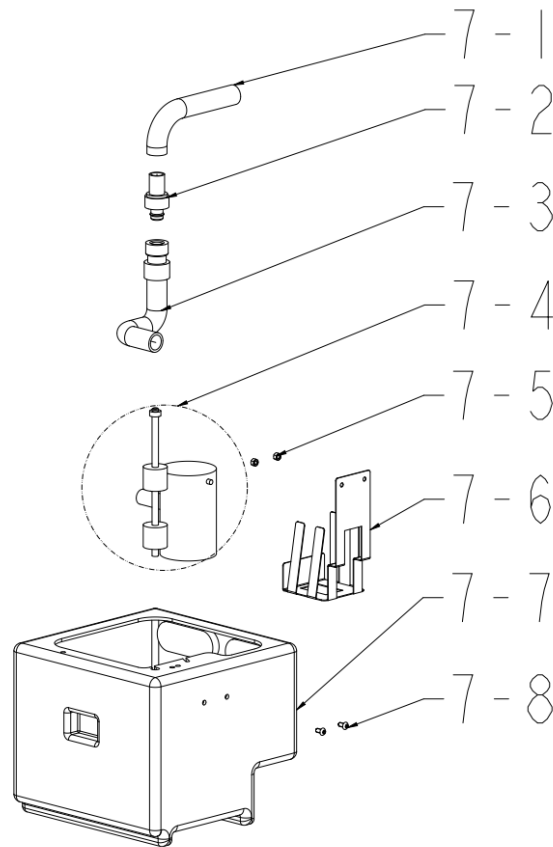


04 Wastewater Connector Assembly (590946021553)

No.	Item Code	Mark	Item Description	Qty.	Substitute	Note
1	-		Right Panel Assembly	1		
2	-		Rear Cover Assembly	1		
3	-		Frame Assembly	1		
4	590998521053		Wastewater Hopper, Rubber	1		
5	590998521045		Wastewater Hopper Bracket, Metal	1		
6	590998521008		Combination Screw, M6x16	4		
7	-		Workstation Recovery Tank Assembly	1		
8	590998521041		Front Cover Assembly	1		
9	590998521023		Wastewater Outlet	1		

1= Supply as package. 2= Supply with constraints. 3= Phasing-out supply. 4= Supply as assembly. 5= Check other tables.

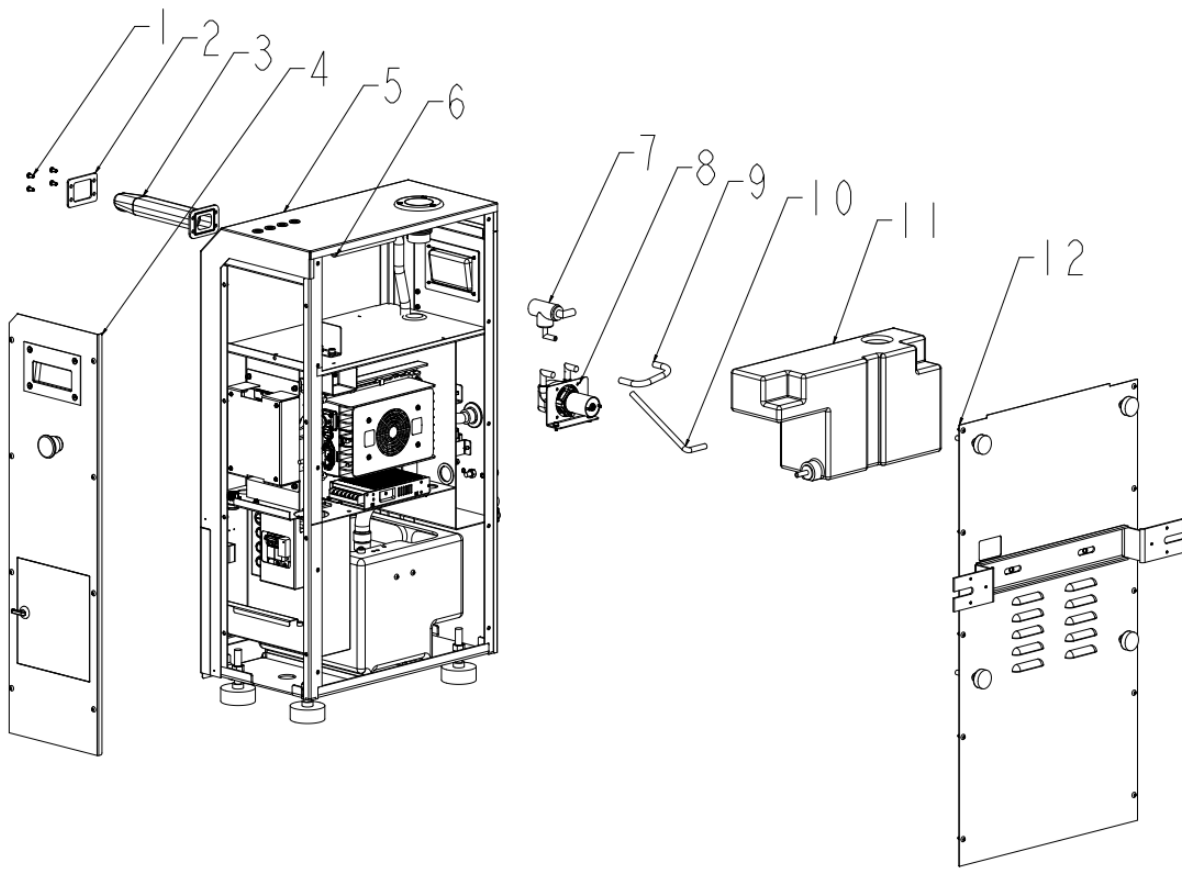
05 Recovery Tank (590946021554)



05 Recovery Tank (590946021554)

No.	Item Code	Mark	Item Description	Qty.	Substitute	Note
7-1	590998521019		Wastewater Braided Hose 1	1		
7-2	590998521022		Push Fitting	1		
7-3	590998521019		Wastewater Braided Hose 2	1		
7-4	590998521074		Float Sensor and Drain Pump Assembly (with harness)	1		
7-5	590998521005		Nylon Lock Nut, M5	2		
7-6	590998521044		Drain Pump Bracket	1		
7-7	590998521051		Workstation Recovery Tank, PE	1		
7-8	590998521011		Screw, Black, M5x10	2		

06 Detergent Connector Assembly (590946021555)



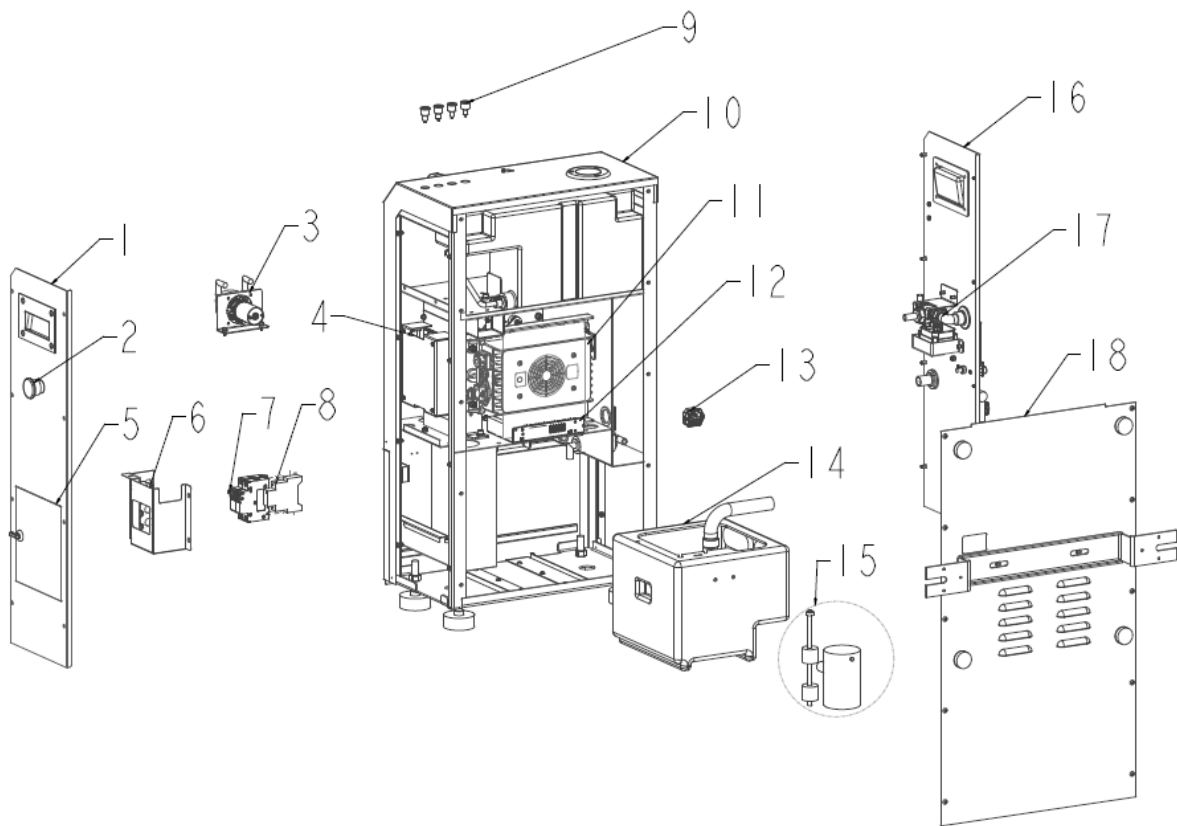
06 Detergent Connector Assembly (590946021555)

No.	Item Code	Mark	Item Description	Qty.	Substitute	Note
1	590998521011		Screw, Black, M5x10	4		
2	590998521048		Fixing Plate, Water Outlet	1		
3	590998521052		Solution Outlet, Rubber	1		
4	-		Left Panel Assembly	1		
5	-		Frame Assembly	1		
6	-		Solution Filling Hose	1		
7	590998521064		Upper Three-Way Fitting Assembly	1		
8	590998521063		Detergent Pump Assembly	1		
9	590998521020		Detergent Hose 1	1		
10	590998521020		Detergent Hose 2	1		
11	590998521065		Detergent Tank Assembly	1		
12	590998521011		Rear Cover Assembly	1		

1= Supply as package. 2= Supply with constraints. 3= Phasing-out supply. 4= Supply as assembly. 5= Check other tables.

Chapter 2: Electronic Control System

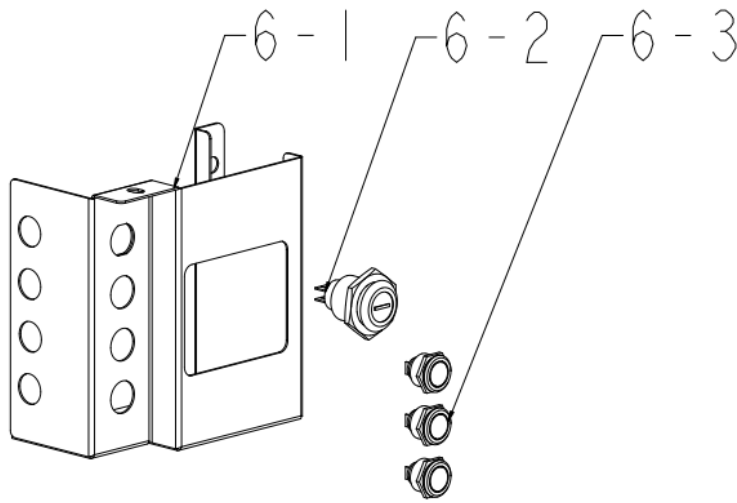
01 Electrical and Electronic System Assembly (590946021556)



01 Electrical and Electronic System Assembly (590946021556)

No.	Item Code	Mark	Item Description	Qty.	Substitute	Note
1	-		Left Panel Assembly	1		
2	590998521072		Emergency Stop Button	1		
3	590998521063		Detergent Pump Assembly	1		
4	590998521061		CCU Assembly (with housing)	1		
5	-		Side Door Assembly	1		
6	-		Air Circuit Breaker Cover Assembly	1		
7	590998521039		Air Circuit Breaker	1		
8	590998521040		Charge Relay	1		
9	590998521070		LED Indicator light (with harness)	4		
10	-		Frame Assembly	1		
11	590998520194		Built-in Charger, 28.8 V 30A	1		
12	590998521038		AC-DC Convertor, 85 ~ 264 VAC to 24VDC, 150W	1		
13	590998521079		AC Switch (with harness)	1		
14	-		Workstation Recovery Tank Assembly	1		
15	590998521074		Float Sensor and Drain Pump Assembly (with harness)	1		
16	-		Left Panel Assembly	1		
17	590998521066		Electric Three-way Ball Valve	1		
18	-		Rear Cover Assembly	1		

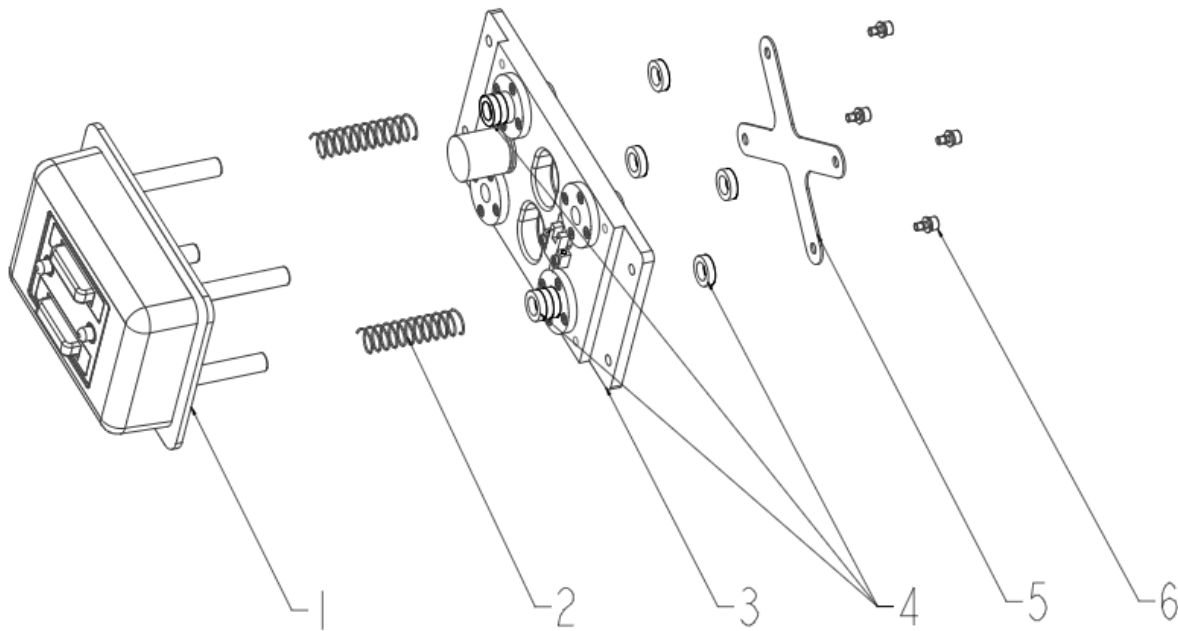
02 Air Circuit Breaker Cover Assembly (590946021557)



02 Air Circuit Breaker Cover Assembly (590946021557)

No.	Item Code	Mark	Item Description	Qty.	Substitute	Note
6-1	590998521049		Air Circuit Breaker Cover	1		
6-2	590998521071		Auto/manual Key Switch (with harness)	1		
6-3	590998521073		Button Switch (with harness)	3		

03 Charging Mechanism Assembly (590946021558)

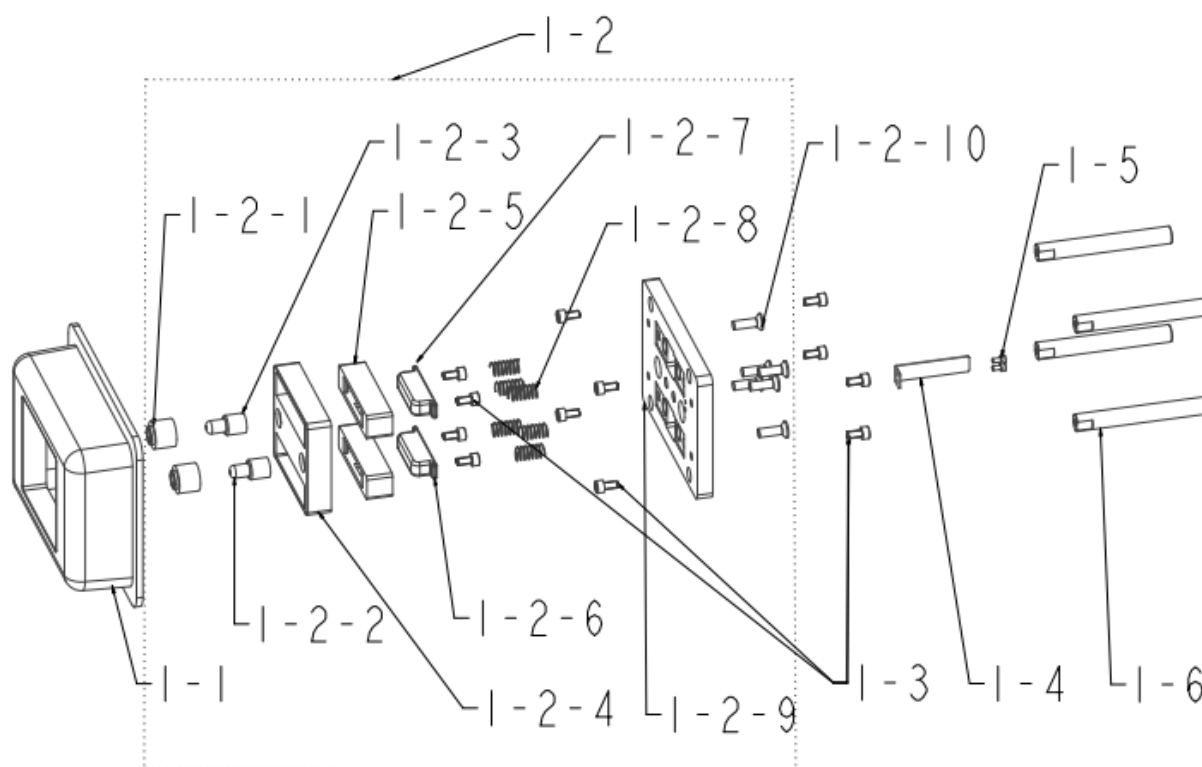


03 Charging Mechanism Assembly (590946021558)

No.	Item Code	Mark	Item Description	Qty.	Substitute	Note
1	-		Front Charging Plate Assembly	1		
2	590998521015		Spring 2, Charing Mechanism	2		
3	590998521062		Rear Charging Plate Assembly	1		
4	590998521034		Washer, Charing Mechanism	10		
5	590998521047		Guide Rod Connector Bracket	1		
6	590998521001		Combination Screw, M5x10	4		

1= Supply as package. 2= Supply with constraints. 3= Phasing-out supply. 4= Supply as assembly. 5= Check other tables.

04 Front Charging Plate Assembly (590946021559)

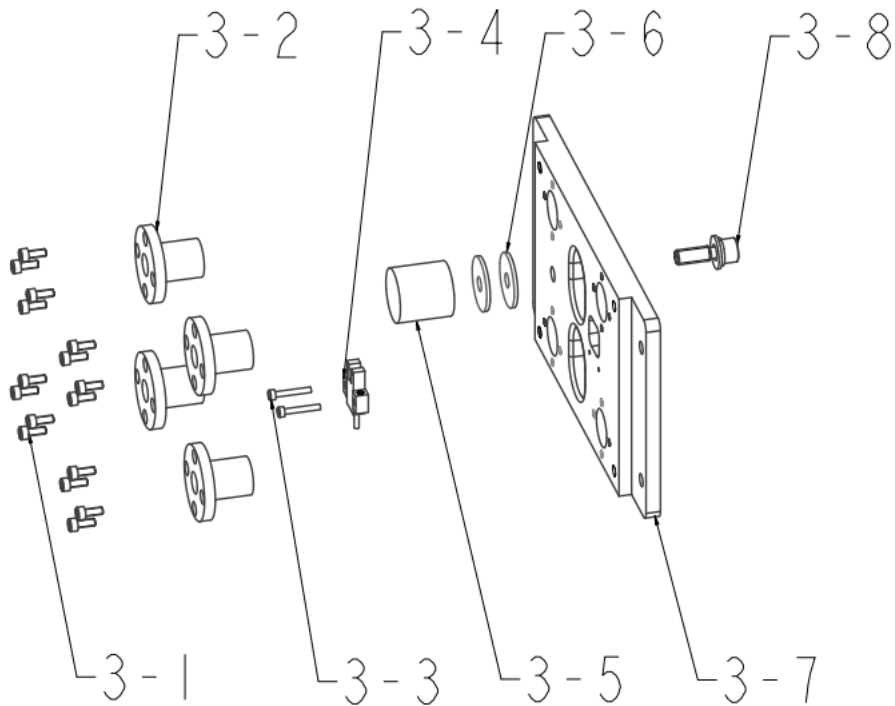


04 Front Charging Plate Assembly (590946021559)

No.	Item Code	Mark	Item Description	Qty.	Substitute	Note
1-1	590998521059		Charging Enclosure, Plastic	1		
1-2	590998521068		Charging Contact Assembly	1		
1-2-1	590998521056		RS 485 Contact Sleeve, Plastic	2		
1-2-2	590998521075		485- Contact (with black wiring)	1		
1-2-3	590998521077		485+ Contact (with red wiring)	1		
1-2-4	590998521055		Charging Connector, Plastic	1		
1-2-5	590998521058		Charging Plate Bracket	2		
1-2-6	590998521076		Charging Plate- (with black wiring)	1		
1-2-7	590998521078		Charging Plate+ (with red wiring)	1		
1-2-8	590998521014		Spring 1, Front Charging Plate Assembly	6		
1-2-9	590998521057		Front Charging Plate, Plastic	1		
1-2-10	590998521004		Screw, M6x20	6		
1-3	590998521007		Screw, M4x10	12		
1-4	590998521042		Photoelectric Trigger Flap	1		
1-5	590998521000		Screw, M3x6	2		
1-6	590998521013		Guide Rod, Front Charging Plate Assembly	4		

1= Supply as package. 2= Supply with constraints. 3= Phasing-out supply. 4= Supply as assembly. 5= Check other tables.

05 Rear Charging Plate Assembly (590946021560)



05 Rear Charging Plate Assembly (590946021560)

No.	Item Code	Mark	Item Description	Qty.	Substitute	Note
3-1	590998521007		Screw, M4x10	16		
3-2	590998521012		Bearing, Rear Charging Plate Assembly	4		
3-3	590998521006		Combination Screw, M3x16	2		
3-4	590998521080		Slot-Type Photoelectric Sensor	1		
3-5	590998521035		Damping Block, Rear Charging Plate Assembly	1		
3-6	590998521025		Washer, M8*30*2	2		
3-7	590998521054		Rear Charging Plate	1		
3-8	590998521010		Combination Screw, M8x30	1		

1= Supply as package. 2= Supply with constraints. 3= Phasing-out supply. 4= Supply as assembly. 5= Check other tables.

Appendix

01 Accessories

No.	Item Code	Item Description	Qty.	Type
1	590998521017	Drain Hose Kit	1	
2	590998521032	Drain Hose	1	
3	590998521026	Fitting (Female threaded end and smooth end)	1	
4	590998521033	Clamp, 21-38mm, SUS 304	1	
5	590998521018	Gasket, G3/4, Rubber	2	
6	-	Fitting (one female and one male threaded end)	1	
7	590998521060	Wall Bracket Kit	1	
8	590998521024	Wall Bracket	1	
9	590998521009	Expansion Bolt	2	
10	-	Combination Screw, M8x16	2	
11	590998521016	Water Inlet Hose Kit	1	
12	590998521037	Inlet Hose	1	
13	590998521021	Gasket, G1/2, Rubber	2	
14	-	Fitting, G1/2 to G3/4	1	
15	590998521030	Extended Wall Bracket Kit	1	
16	590998521002	Stainless Steel Flange	4	