

Parameter Configuration of SC Series

Name Definition: SC=Scissor Lift, 08=Working Height, E=Electric Drive, H=Hydraulic Drive, C=Compact, N=Narrow

	SC08EC/HC	SC08EN/HN	SC10EN/HN	SC10E/H	SC12E/H	SC14E/H	SC16E/H
Safe Working Load	230kg	380kg	230kg	450kg	320kg	320kg	200kg
S.W.L On Extension	113kg	113kg	113kg	113kg	113kg	113kg	113kg
Maximum Workers Number(indoor)	2	2	2	2	2	2	2
Maximum Workers Number(outdoor)	/	1	/	1	1	/	/
Maximum Working Height	7.8m	8m	10m	10m	12m	14m	15.7m
Maximum Platform Floor Height	5.8m	6m	8m	8m	10m	12m	13.7m
Overall Length	1.885m	2.48m	2.48m	2.48m	2.48m	2.48m	2.84m
Overall Width	0.76m	0.81m	0.81m	1.15m	1.15m	1.15m	1.25m
Overall Height(Rails up)	2.18m	E:2.2m H:2.24m	E:2.32m H:2.36m	2.32m	2.44m	2.58m	2.58m
Overall Height(Rails down)	1.78m	1.81m	1.93m	1.78m	1.92m	2.04m	2.17m
Platform Size(Length/width)	1.67x0.74m	2.27x0.81m	2.27x0.81m	2.27X1.12m	2.27X1.12m	2.27X1.12m	2.64x1.02m
Platform Extension Size	0.9m	0.9m	0.9m	0.9m	0.9m	0.9m	0.9m
Ground Clearance(Lowered)	0.07m	0.10m	0.10m	0.1m	0.1m	0.1m	0.1m
Ground Clearance(Raised)	0.015m	0.019m	0.019m	0.019m	0.019m	0.019m	0.019m
Wheel Base	1.37m	1.87m	1.87m	1.87m	1.87m	1.87m	2.22m
Minimum Turning Radius(Inside/Outside)	1.75m	2.2m	2.2m	2.5m	2.5m	2.5m	2.5m
Lifting Motor	E:24V/2.0kw H:24V/3.0kw	24V/3.3Kw	24V/3.3kw	24V/4.5Kw	24V/4.5Kw	24V/4.5Kw	E:24V/1.5Kw H:24V/4.5Kw
Driving Motor	E:24V/0.5kw H:24V/3.0kw	E:24V/1.5kw H:24V/3.3kw	E:24V/1.5kw H:24V/3.3kw	E:24V/1.5Kw H:24V/4.5Kw	E:24V/1.5Kw H:24V/4.5Kw	E:24V/1.5Kw H:24V/4.5Kw	E:24V/1.5Kw H:24V/4.5Kw
Travel Speed(Lowered)	E:4.5 Km/h H:3.8 Km/h	E:4.0 Km/h H:3.2Km/h	E:4.0Km/h H:3.2Km/h	E:4.0Km/h H:3.2Km/h	E:4.0Km/h H:3.2Km/h	E:4.0Km/h H:3.2Km/h	E:4.0 Km/h H:3.2Km/h
Travel Speed(Raised)	0.8Km/h	0.8Km/h	0.8Km/h	0.8Km/h	0.8Km/h	0.8Km/h	0.8Km/h
Up/Down Speed	20/32S	32/35S	32/35S	27/36 S	48/48S	80/60S	70/52S
Batteries	4 x 6V/220Ah	4 x 6V/232Ah	4 x 6V/232Ah	4X6V/232Ah	4X6V/232Ah	4X6V/280Ah	4x6V/280Ah
Integrated Charger	24V/30Ah	24V/30A	24V/30A	24V/30Ah	24V/30Ah	24V/30Ah	24V/30A
Gradeability	25%	25%	25%	25%	25%	25%	25%
Maximum Working Slope(indoor)	1.5°/3°	2°/3°	1.5°/3°	2°/3°	2°/3°	1.5°/3°	1.5°/3°
Tires	305x100mm	381x127mm	381x127mm	381X127mm	381X127mm	381X127mm	381X127mm
Total Weight	E:1510kg H:1485kg	2100kg	2190kg	2655kg	2990kg	2925kg	3300kg



NOBLELIFT

INTELLIGENT EQUIPMENT



SC08HC/EC



SC08-10HN/EN



SC10-16H/E

NOBLELIFT INTELLIGENT EQUIPMENT CO.,LTD.

NOBLELIFT CHINA

Add:528 Changzhou Road,Taihu Sub-district,
Changxing, Zhejiang 313100 China
Tel:86-572-6210817 6210311
Fax:86-572-6210777 6128612
Email:info@nobelift.com
Http:www.nobelift.com www.nobelift.cn

NOBLELIFT NORTH AMERICA CORP

Add:2461 S Wolf Road Des Plaines,
IL 60018
Tel:001-847-595-7100
Fax:001-847-595-7200
Email:sales@nobelift.com
Http:www.nobelift.us

NOBLELIFT



Official website Our Wechat

NOBLELIFT RUSSIA

ООО «Ноблелифт Рус»
194292, Санкт-Петербург
Домостроительная ул. 4А офис 301
Бизнес-центр «Парнас»
Тел.: +7-800-700-28-97
Email: sales@nobelift.com.ru
Http: www.nobelift.com.ru

NOBLELIFT EUROPE GMBH

Add:Borsigstrasse 9-93082 Barbing
Germany
Tel:+49 9401 607930
Fax:+49 9401 6079329
Email:mail@nobelifteurope.com
Http:www.nobelifteurope.com

NOBLELIFT THAILAND CO., LTD

Add: 888 Moo21,Tambol Bangpleeyai,
Amphur Bangplee,
Samut Prakarn 10540, Thailand
Tel: +66 (0)21305131
Email: salesthailand@nobelift.com
Http: www.nobelift.com

NOBLELIFT

INTELLIGENT EQUIPMENT

SHANGHAI STOCK EXCHANGE LISTED
STOCK CODE 603611
Aerial work platform

NEW!





• Emergency lowering system

When required, the platform can be lowered to the ground from the base of the unit.



• Safety maintenance support bar

Ensures safety during maintenance.



• Platform door self-locking

Door lock design is easy and convenient. It has self locking function to ensure safe operation.



• Manual relief valve

When required, the platform can be lowered to the ground from the base of the unit.



• Hour Meter

Hour meter will operate whenever the truck is under power. Hours should be reviewed periodically to ensure timely periodic maintenance.



• Fault code display

Fault code display will help maintenance to pin-point the mechanical problem. See your maintenance manual for codes and descriptions.



• Non-Marking Tire

Durable and long-lasting non-marking tires leave any surface clean from tire marks. Tread design resists debris.



• Proportional control handle

Control the rate of lift and travel with precision.



• One-way extension platform

Allows ability to work above objects and increases operator efficiency by expanding the work area.



• Main power switch

When in storage, pressing this button will cut all power to the unit.



• Charging protection system

110 plug in charge with auto-stop to avoid over charging.



• Warning lamp

Warning lamp will remain lit whenever unit is in operation.



• Emergency stop button

Up and down operating system are both equipped with emergency stop button. In case of emergency, all actions will be stopped after pressing the button, ensuring worker safety.



• Pot hole protection system

When platform is raised, pot hole protection automatically engages. This will ensure safe operation in the event of uneven surfaces.



• Auto brake system

Provides anti-rollback on a grade during travel.



• Inclined protection system

When the operating vehicle exceeds maximum operating angle, this system will automatically alarm and disable all operations except lowering.



• Horn and motion alarm system

Horn and motion beeper with security alarm function.



• Access Panels

Access panels located on either side of the frame allowing easy access to batteries and maintenance if needed.

SC Series

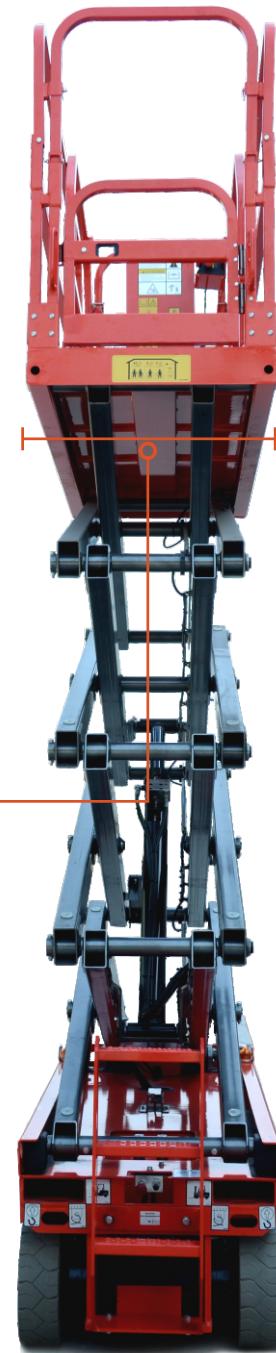
Noblelift's SC series of aerial work platforms provide lift and travel for the operator with platform extension to increase the working range of the operator. This equipment is suitable for door and outdoor applications. Our equipment is widely used in: electrical power, petrochemical, aircraft maintenance, manufacturing, equipment installation and building maintenance.

SC08-10HN/EN (N=Narrow)

W: 0.81 M

SC08HC/EC (C=Compact)

W: 0.74 M L: 1.67 M



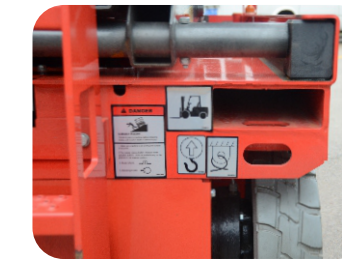
• Full height travel

Maneuver and travel at any height improving efficiency. Speed automatically reduced for safety when platform is raised above xxx inches. (insert height).



• Portable control box

Portable controls allow operation of the unit from outside the work area.



• Standard transportation forklift holes and crane holes

Convenient for forklift handling and hoisting operation.



• Foldable Rails

Foldable rails allow access into areas with height restrictions at entry.



• Front wheel drive and steer

Tight turning radius allowing easy operation in tight spaces.

